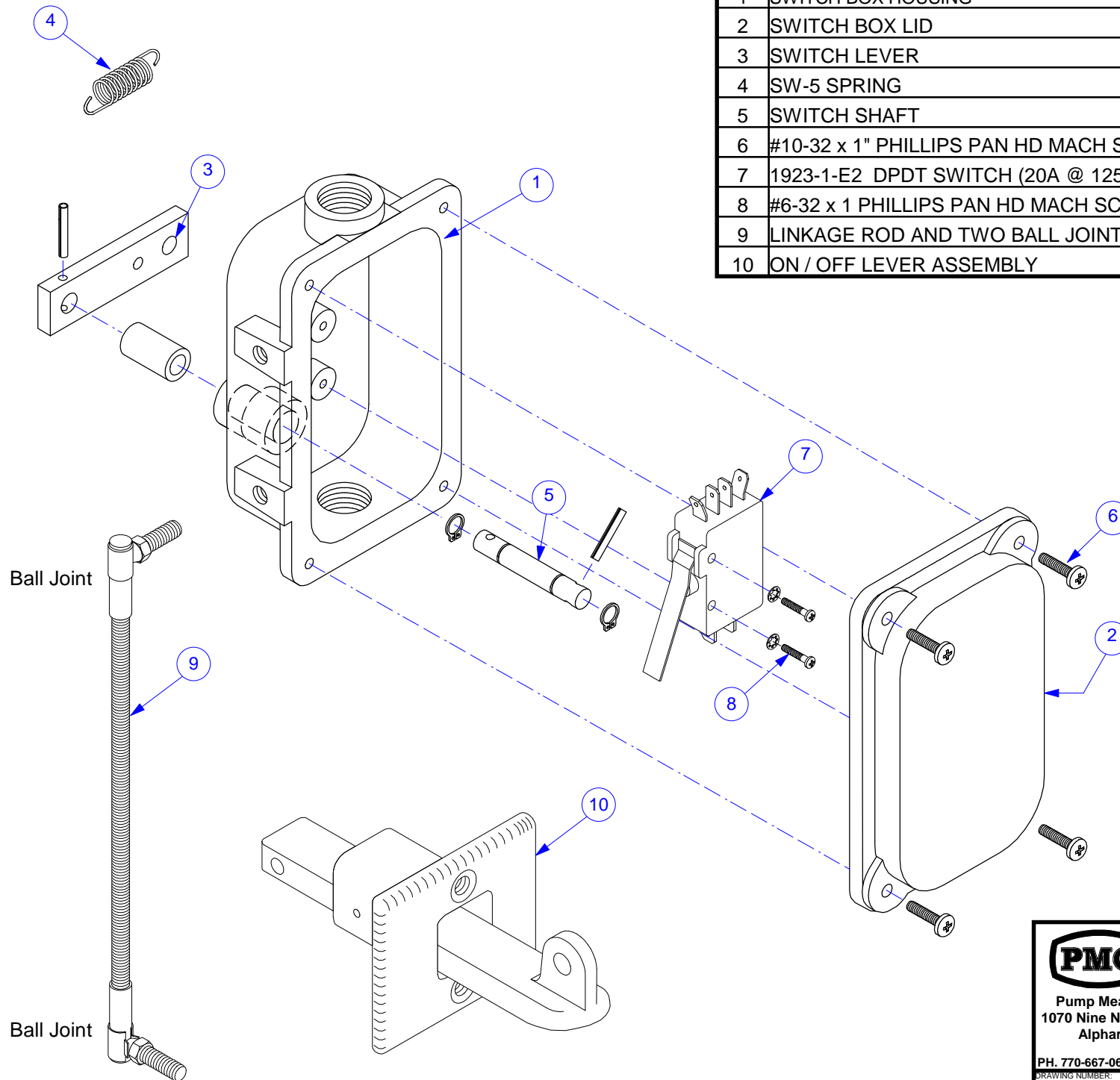



NO.	DESCRIPTION	QTY	PART NO.
1	SWITCH BOX HOUSING	1	75-SW1
2	SWITCH BOX LID	1	75-SW2
3	SWITCH LEVER	1	75-SW4
4	SW-5 SPRING	2	
5	SWITCH SHAFT	1	75-SW3
6	#10-32 x 1" PHILLIPS PAN HD MACH SCREW	4	35-41105
7	1923-1-E2 DPDT SWITCH (20A @ 125VAC)	1	1923-1-E2
8	#6-32 x 1 PHILLIPS PAN HD MACH SCREW	2	35-22102
9	LINKAGE ROD AND TWO BALL JOINTS	1	LRBJ
10	ON / OFF LEVER ASSEMBLY	1	75-CD27/28



 Pump Measure Control, Inc. 1070 Nine North Drive, Suite 100 Alpharetta, GA 30004 PH. 770-667-0667 FAX 770-667-0476 <small>DRAWING NUMBER:</small>		EXPLOSION PROOF SWITCH BOX ASSEMBLY	
		<small>DATE:</small> 2/16/05	<small>DRAWN BY:</small> CAT
<small>SCALE:</small> NTS		<small>"THIS DRAWING CONTAINS PROPRIETARY INFORMATION AND IS SUBJECT TO COPYRIGHT OWNERSHIP BY PMC, INC"</small>	
91-12G11181			