



Hose Stand Fuel Dispenser

HSH-30 and HSH-60 series hose stands are designed to provide low cost, high speed truck fueling. The HSH-30 series hose stands have a nominal flow rate of 35 GPM through a single 1" hose and high capacity truck nozzle. The HSH-60 series hose stands have a nominal flow rate of 60 GPM through a single 1½" hose and high capacity truck nozzle. Actual flow rate will depend upon pump size, meter size and installation conditions.

HSH-30 and HSH-60 series hose stands have an 8½" square column, fabricated from 12 gauge steel with a 14" square, 7 gauge steel base. All stands include a DPDT pump/valve switch and hose hanger. A 1" pre-piped internal solenoid valve is optional on the HSH-30 series hose stand. A 1½" valve is optional on the HSH-60 series hose stand. A counterweight high hose retractor is available as an accessory.

HSH-30 and HSH-60 series hose stands are used to fuel far side tanks on trucks. These stands can be used in conjunction with meter stands, high speed dispensers, or conventional computing or non-computing dispensers. The optional solenoid valve can be factory mounted into the hose stand for isolation from the master dispensing device.



- ◆ 35 & 60 GPM Configurations
- ◆ Designed for the commercial environment, Heavy Duty Construction
- ◆ Integral nozzle boot, hose hanger and On/Off switch provide convenience and clean appearance
- ◆ Integral internally mounted solenoid valve
- ◆ Satellite hose stands mount in parallel with meter stand or dispenser and allows for simultaneous fueling of saddle tanks
- ◆ Counterweight high hose devices available as accessories
- ◆ Optional Overhead Supply Configurations



Hose Stand Fuel Dispenser

SPECIFICATIONS

MODELS

For Underground Piping

HSH-30B – Hose Stand with hose hanger, switch and 1" inlet and outlet connections.
 HSH-30BV – Hose Stand with hose hanger, switch and 1" pre-piped solenoid valve.
 HSH-60B – Hose Stand with hose hanger, switch and 1-1/2" inlet and outlet connections.
 HSH-60BV – Hose Stand with hose hanger, switch and 1-1/2" pre-piped solenoid valve.

For Above Ground Piping

To configure Hose Stand for overhead piping, add the -OH extension to the part number.

CONSTRUCTION

Pedestal: 12 Gauge powder coated steel OSHA safety green.
 Base: 7 Gauge powder coated steel OSHA safety green.

OPTIONAL SOLENOID

HSH-30BV - 1" normally closed.
 HSH-60BV - 1-1/2" normally closed.

SUPPLY CONNECTION

HSH-30 series - 1" NPT.
 HSH-60 series - 1-1/2" NPT.

OUTLET CONNECTION

HSH-30 - 1" NPT.
 HSH-60 - 1-1/2" NPT.

MAXIMUM WORKING PRESSURE

50 PSI.

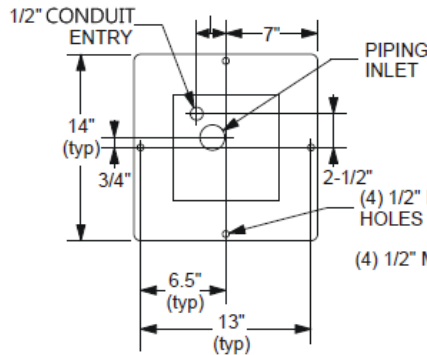
VOLTAGE AND FREQUENCY

115VAC 60 Hz, 240VAC 50 Hz optional.

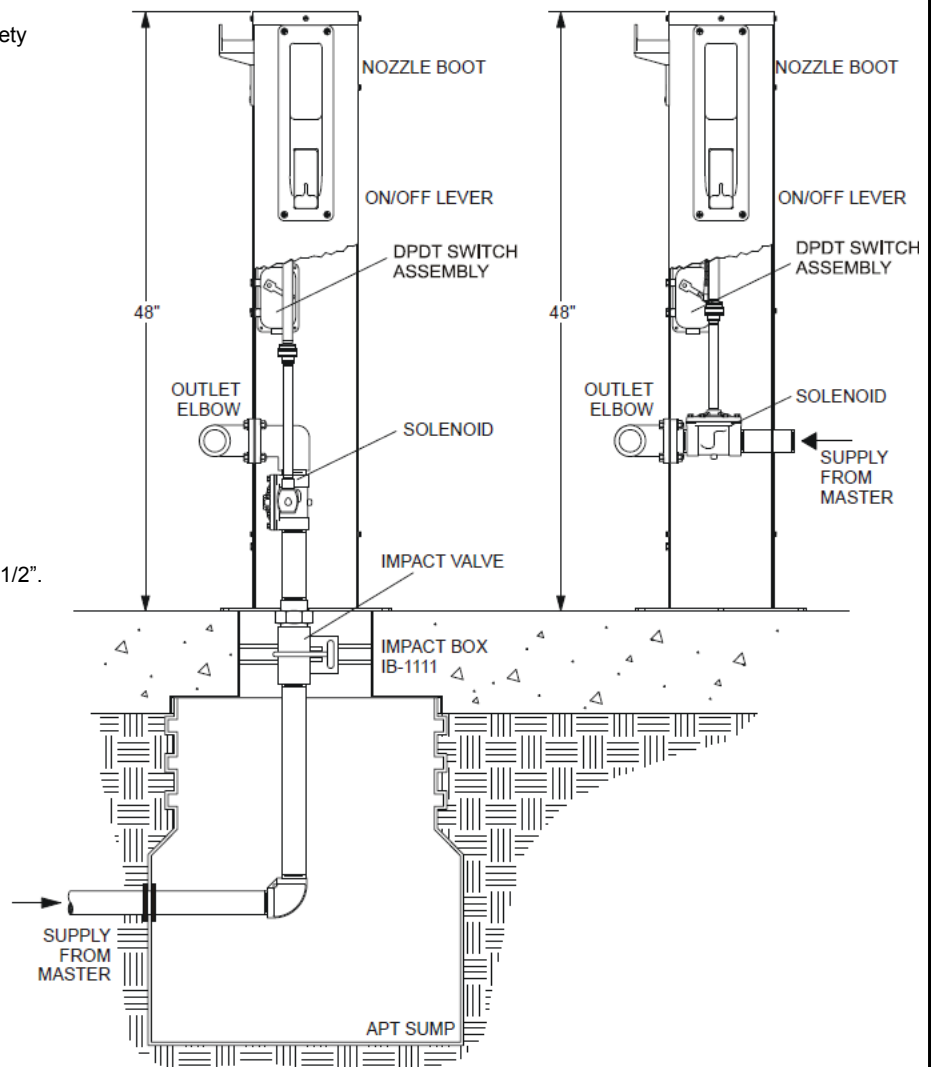
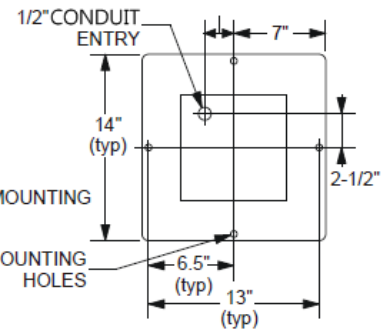
NOZZLE COMPATABILITY

11A Style, 7H Style, and 1290 Style through 1-1/2".
 Contact factory for other types.

Underground Piping Models



Above Ground Piping Models



Typical Hose Stand Installation
 Models with optional solenoid shown

